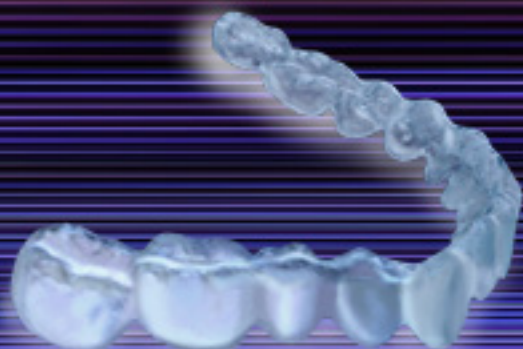


## POSSIBLE ADVANTAGE

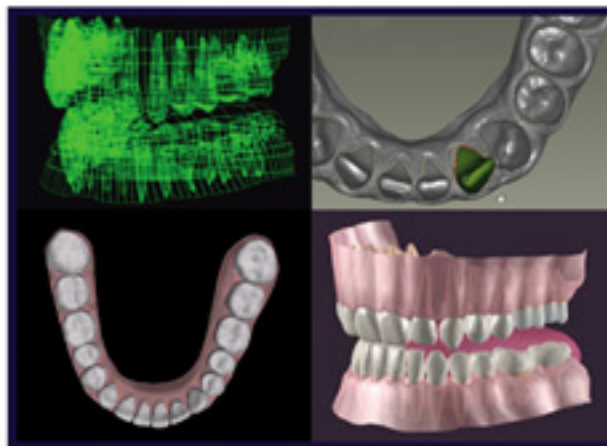
- FDA APPROVED LAMINATES
- GREATER COMFORT
- LESS DENTAL VISITS
- LATEST TECHNOLOGY
- STRUCTURAL MEMORY
- NO DENTAL ATTACHMENTS



**NUBRACE**<sup>TM</sup>.M  
INVISIBLE REMOVABLE ORTHODONTICS



Dual Layer with  
Lower Modulus Liner  
invisible removable orthodontics  
**NUBRACE**



[WWW.NUBRACE.COM](http://WWW.NUBRACE.COM)

**NUBRACE**<sup>TM</sup>.M  
INVISIBLE REMOVABLE ORTHODONTICS

**NUBRACE**<sup>TM</sup>.M  
INVISIBLE REMOVABLE ORTHODONTICS  
A PRODUCT OF  
**SMILE90210**



## POTENTIAL ADVANTAGES

### SCIENTIFICALLY PROVEN

"Bio Mechanics of a Clear Aligner Soft Inner Layer"

T Kalili, A. Caputo, M. Wu;

IADR International and American Dental Research meeting 2007

Article number 1917

### STRUCTURAL MEMORY

- NuBrace aligner consist of an ability to maintain its shape referred to as, "structural memory."
- The aligner is adapted to the computer generated orthodontically positioned model for more accurate tooth movement.

### DENTAL ATTACHMENTS

- NuBrace has developed the "BAR" technique which could eliminates dental attachments that are invasive, may damage teeth and hinder oral hygiene.
- BAR is achieved by placing grooves in patient's stone model which translates into a BAR on the aligner for greater orthodontic control.



WHY WAIT FOR A GREAT SMILE



GET NUBRACE

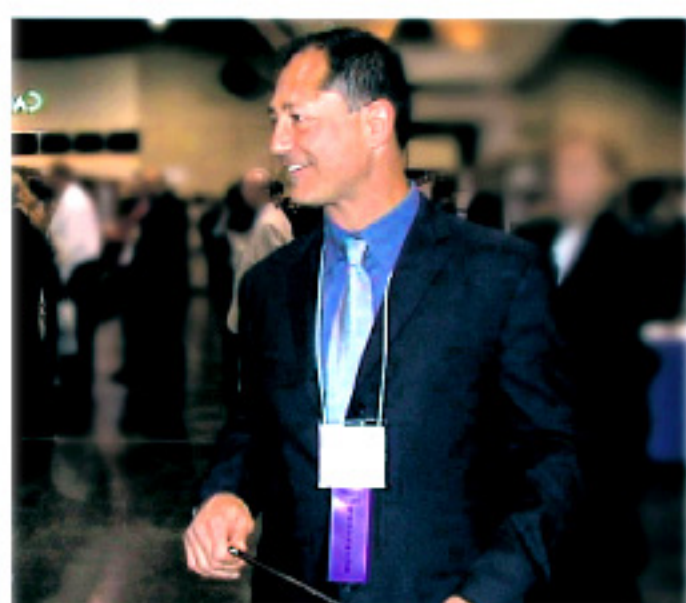
### NuBrace™ Dentists have 3 option on every patient visit:

- (1) Modify lab slip.
- (2) Continue as planned.
- (3) Submit new impression.

- This allows for a safety net to allow dentists to catch impression errors and modify aligner fabrication based on patient's progress not computer projection toward optimum case results.

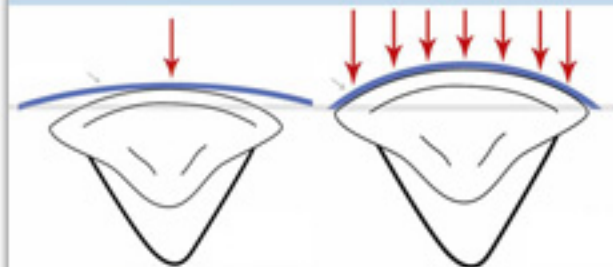
### STREAMLINED PROCESS

- (1) Web based applications.
- (2) Computer technology allows practitioners to manipulate their patient's teeth online.
- (3) Online laboratory prescription.
- (4) Online seminar and examination.
- (5) Online search and secure dentist by zip code.
- (6) Online financing for both patients and doctors through a credible banking firm.



From Dr. Tom Kalili, Founder and CEO, "I would like to thank those who have paved the way for researchers like us to build upon. I am hopeful that support from my friends and family, 20 years of research, patents and global publications will allow a path for others to pursue their dreams as well in the face of world peace."

## SAME FORCE LESS STRESS



OTHER

NUBRACE